

ELAD FDM-S2



USER MANUAL

1 Index

- 2 FDM-S2 Overview 3
 - 2.1 Sampler Exploit 3
 - 2.2 Front Panel Description 3
 - 2.3 Rear Panel Description..... 4
- 3 Software & Driver Installation 5
 - 3.1 Software installation in Windows 8 Windows 7 and Windows XP 5
 - 3.1.1 First-time install in Windows 8 and Windows 7 5
 - 3.1.2 First-time install in Windows XP 9
 - 3.1.3 Update an existing software version 14
 - 3.2 FDM-S2 USB driver..... 15
 - 3.2.1 FDM-S2 USB driver installation in Windows 8 and Windows 7 15
 - 3.2.2 FDM-S2 USB driver installation in Windows XP 18
- Annex A FDM-S2 External Hardware Connector 29
- FDM-S2 Technical Specifications 30
- Declaration of Conformity (EC) 31
- Declaration of Conformity (FCC) 32

2 FDM-S2 Overview

2.1 Sampler Exploit

FDM-S2 is the second born device in our ELAD SDR SAMPLER line. This product line is developed to give the user the possibility to exploit and study the capability of Sampling technique.

With 122.88MHz sampling frequency FDM-S2 can offer the possibility to be a good HF and 6m receiver, but also allow to receive FM Band and part of VHF Band simply adding appropriate pre-selection filters in the front-end of ADC.

Some users of FDM-S2 already exploit the under-sampling technique to use it as pan adapter tuning it at IF frequencies of 68-70 MHz of their transceivers, while others use it to monitor the spectrum of a particular known frequency.

2.2 Front Panel Description



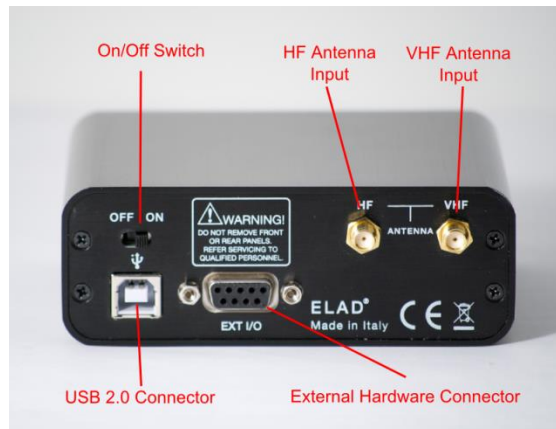
Power Led

Turns on when the receiver is connected to a USB port of the PC and it is switched on

Communication Led

Shows the communication between the receiver and the PC

2.3 Rear Panel Description



USB 2.0 Connector

Connection with the PC. Please use the supplied cable.

On/Off Switch

Turn On/Off the FDM-S2

HF Antenna Input

SMA 50Ω input connector for HF band +20dBm max

VHF Antenna Input

SMA 50Ω input connector for VHF band +20dBm max

External Hardware Connector

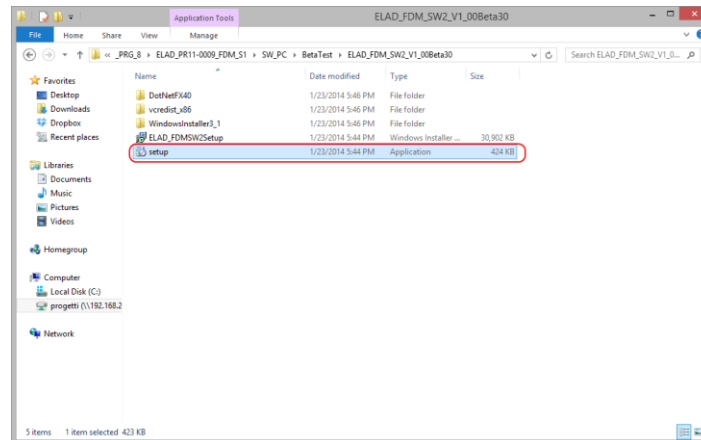
DB9 connector for external hardware (eg pre-selector filters board). **This is NOT a serial port.**

3 Software & Driver Installation

3.1 Software installation in Windows 8 Windows 7 and Windows XP

3.1.1 First-time install in Windows 8 and Windows 7

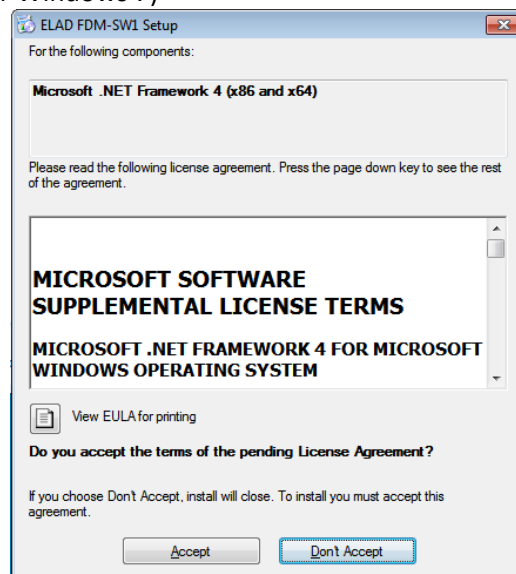
Double-click the file “setup.exe” in the CD .



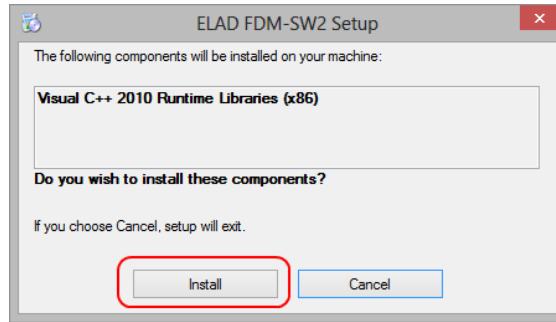
The windows installer first installs the prerequisites:

- Microsoft VC++ 2010 Runtime libraries
 - Microsoft .NET Framework 4.0 (Only for Windows 7)
- and then the FDM-SW2 software.

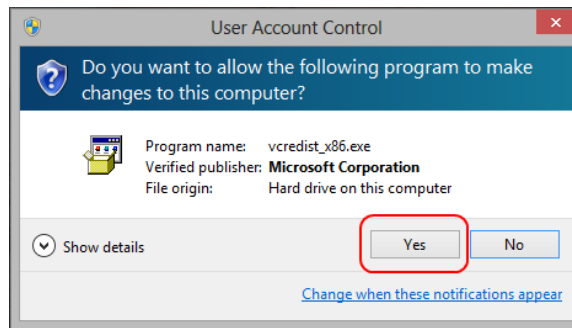
- Click on “Accept” (Only for Windows 7)



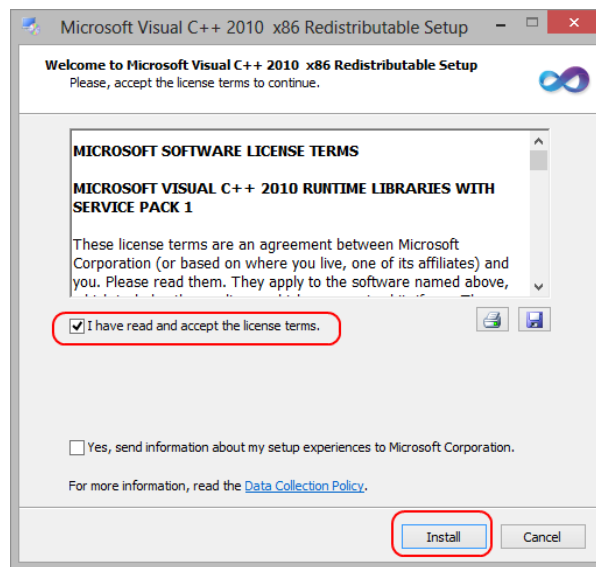
Click on “Install”



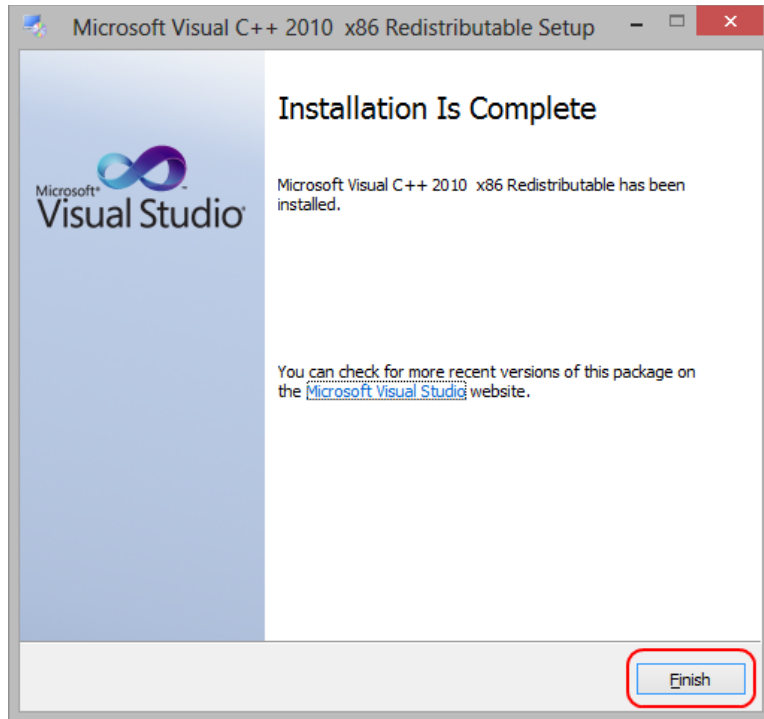
Click on “Yes”



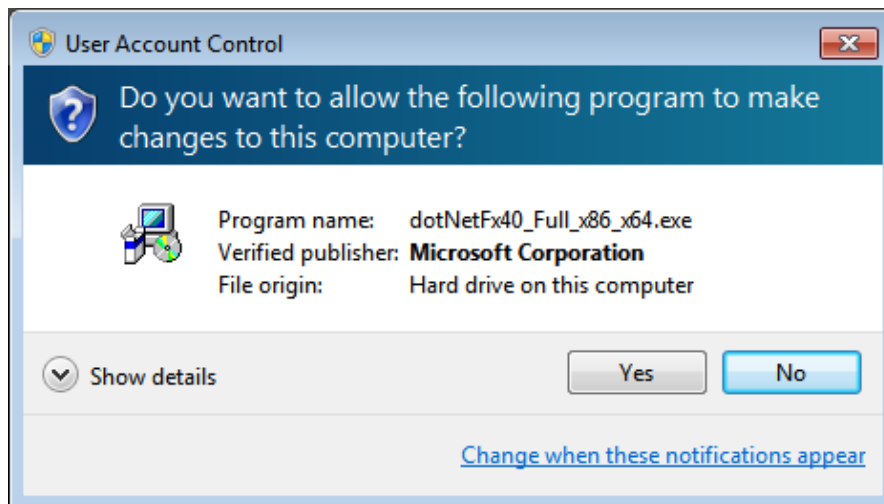
Click on Install



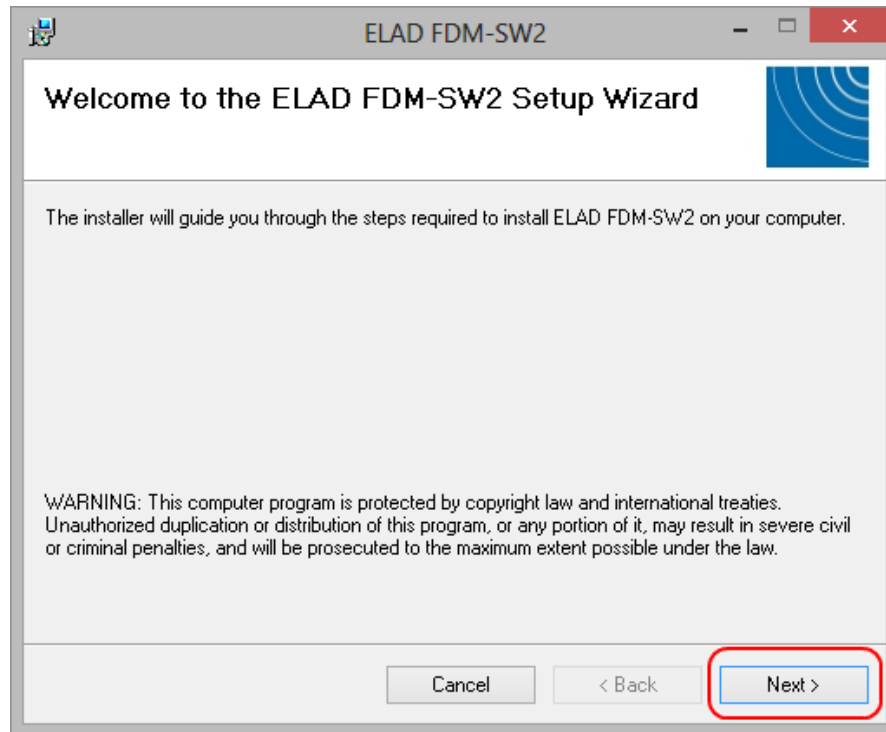
Microsoft Visual C++ 2010 x86 Redistributable installation is complete, click on “Finish”



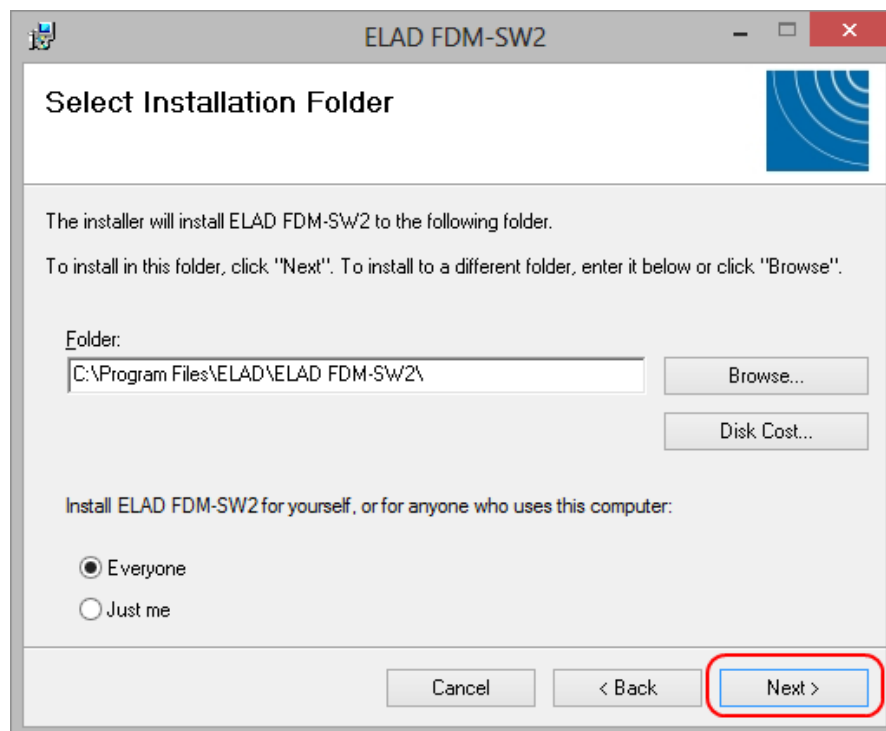
Click on "Yes" to start the installation of the .Net Framework 4.0 (Only for Windows 7)



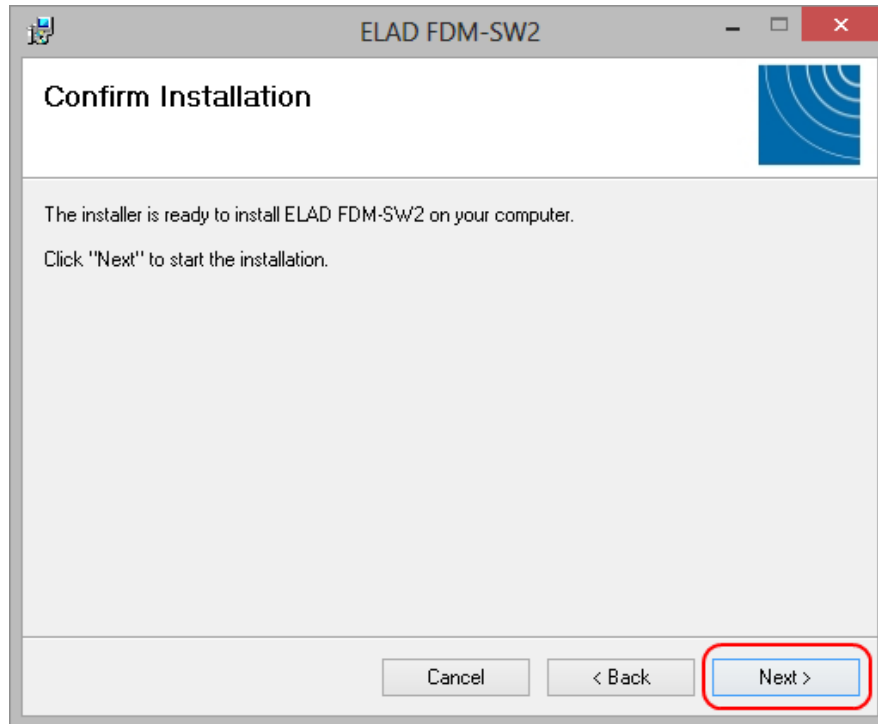
Click to "Next" to start the FDM-SW2 software installation



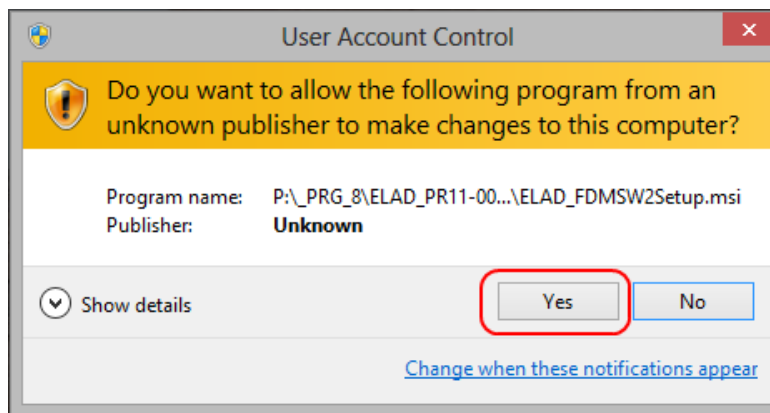
Chose the installation folder, then click on “Next”



Click on “Next”

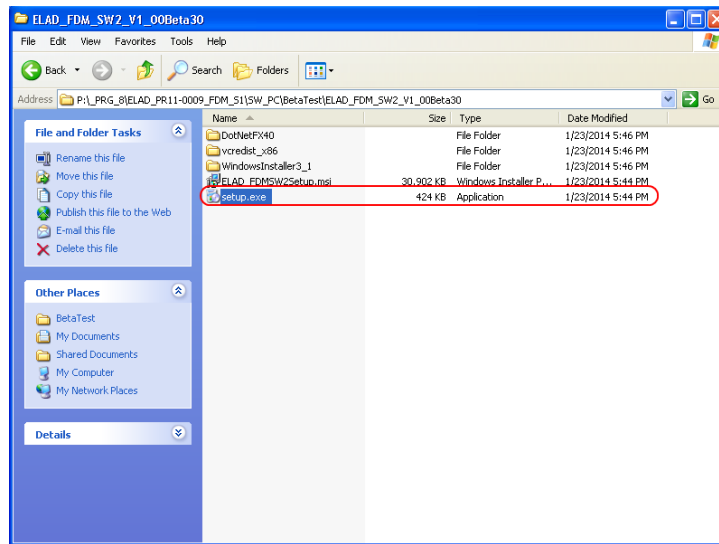


Click on "Yes"

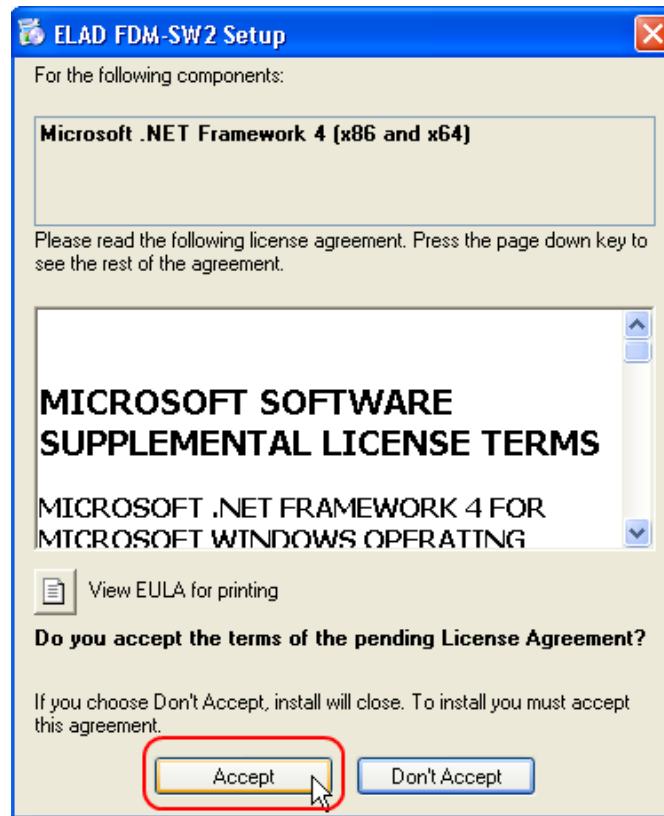


3.1.2 First-time install in Windows XP

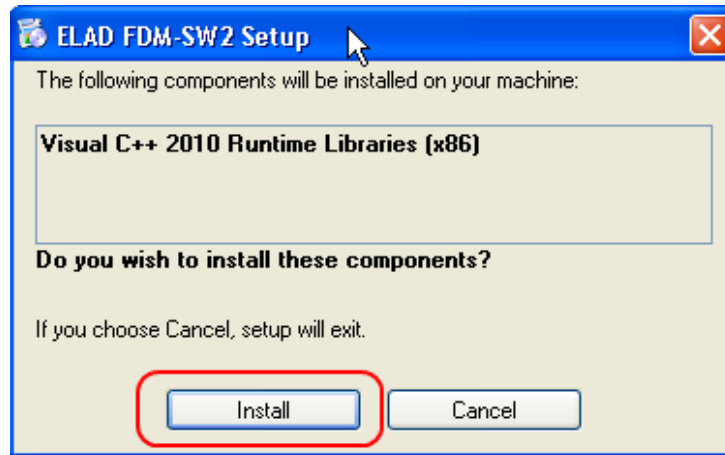
Double-click the file "setup.exe" in the installation folder.



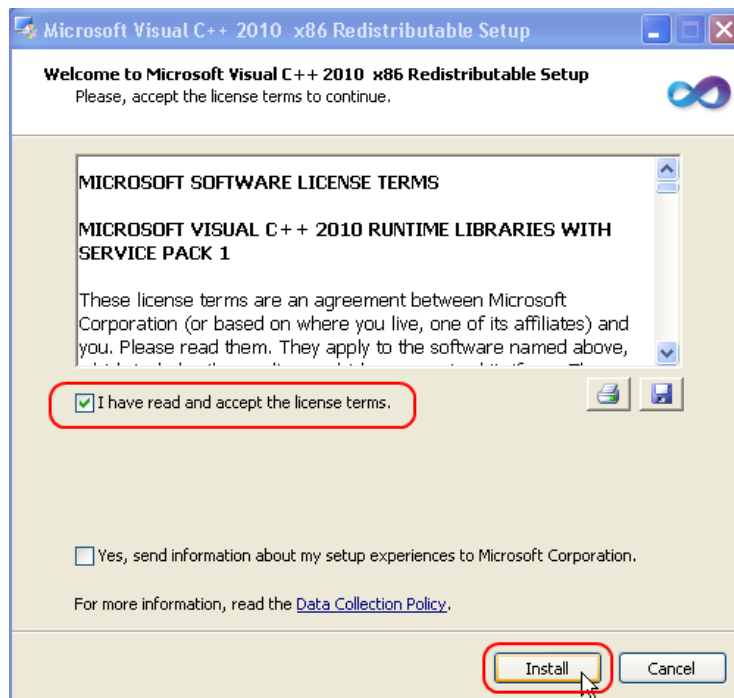
Click on “Accept”



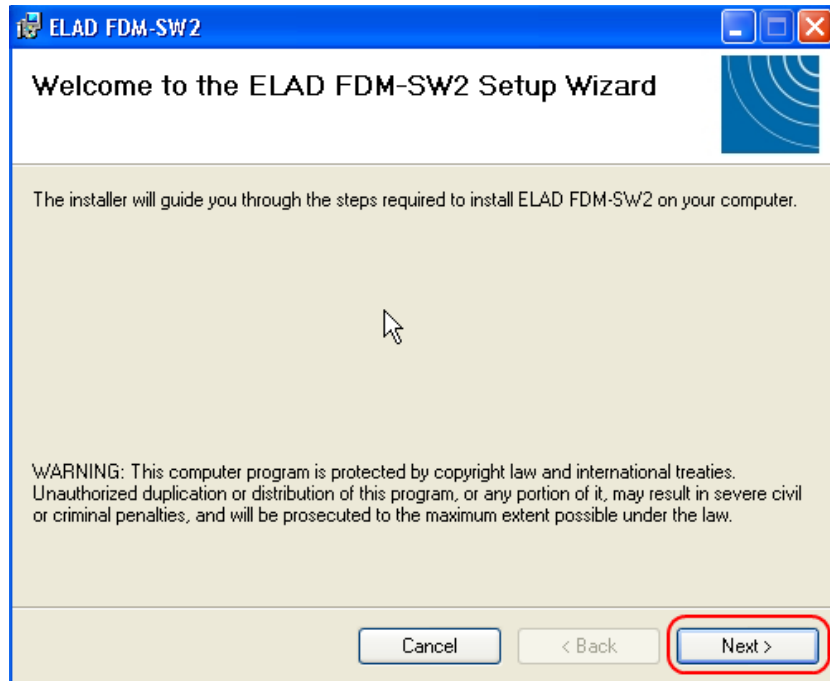
Click on “Install”



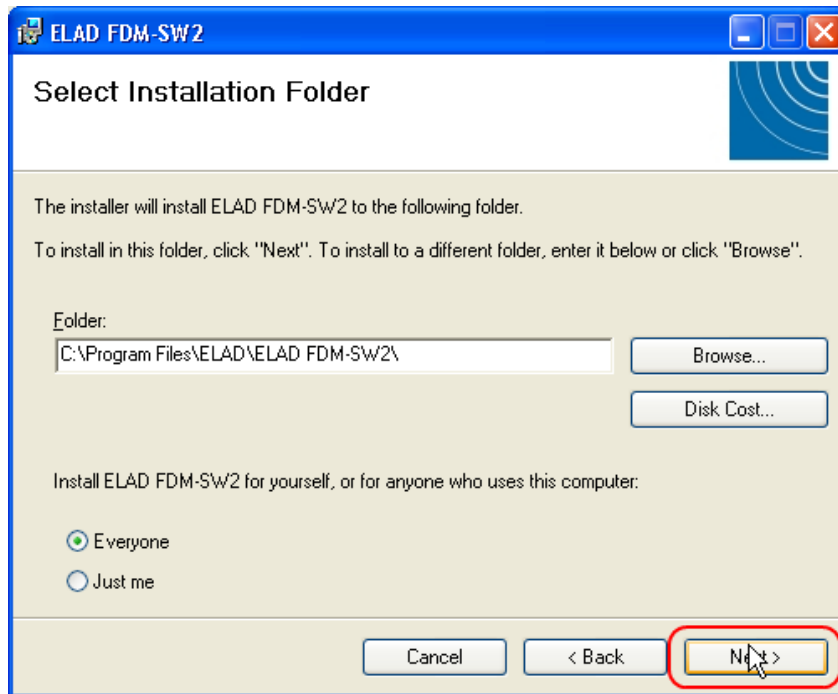
Click on "Install"



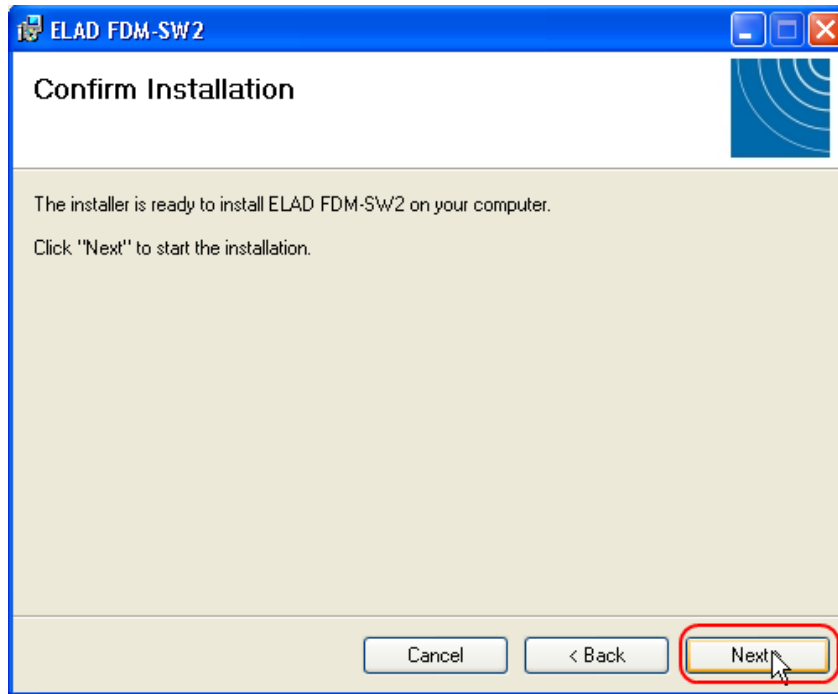
Click on Next to install the FDM-SW2 software



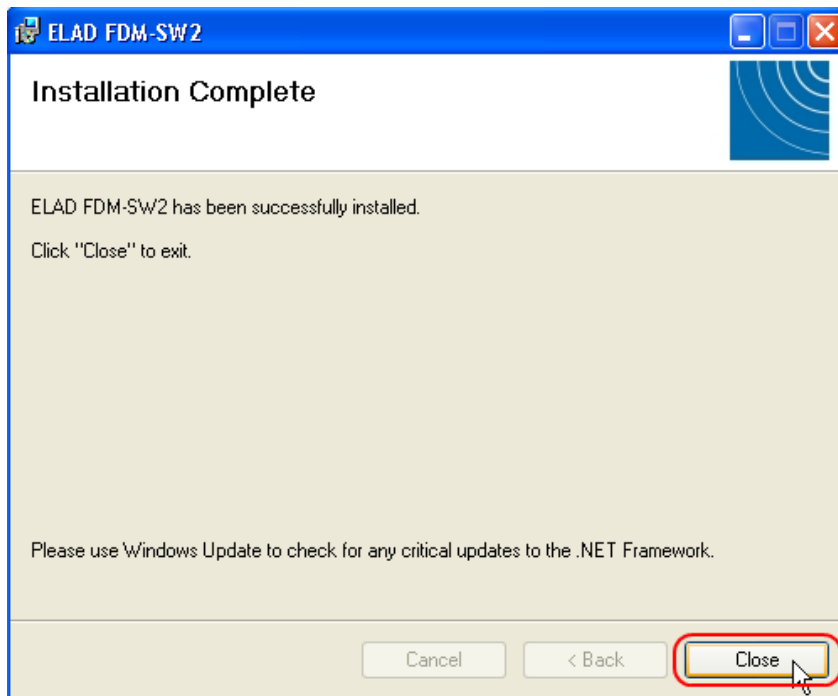
Select the installation folder, then click on “Next”



Click on “Next”



The FDM-SW2 Software installation is completed



3.1.3 Update an existing software version

Double click on file ELAD_FDM_SW2_V_x.xx.msi included in the update and follow the instructions.

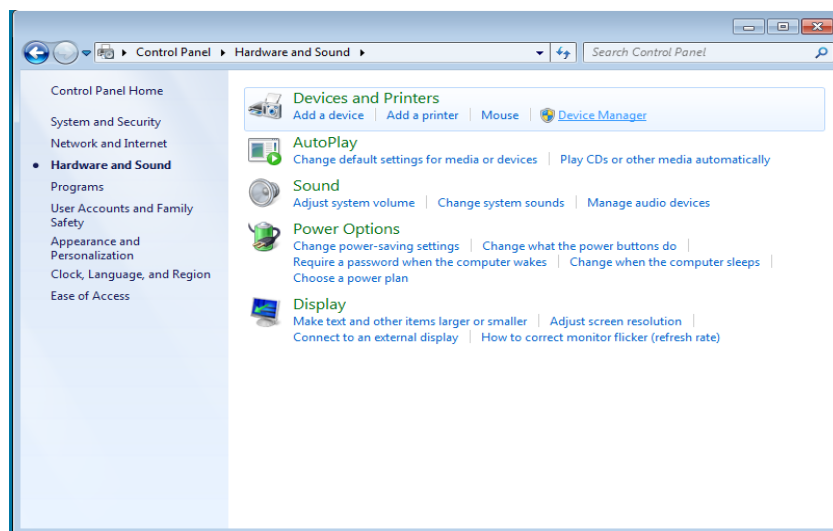
3.2 FDM-S2 USB driver

3.2.1 FDM-S2 USB driver installation in Windows 8 and Windows 7

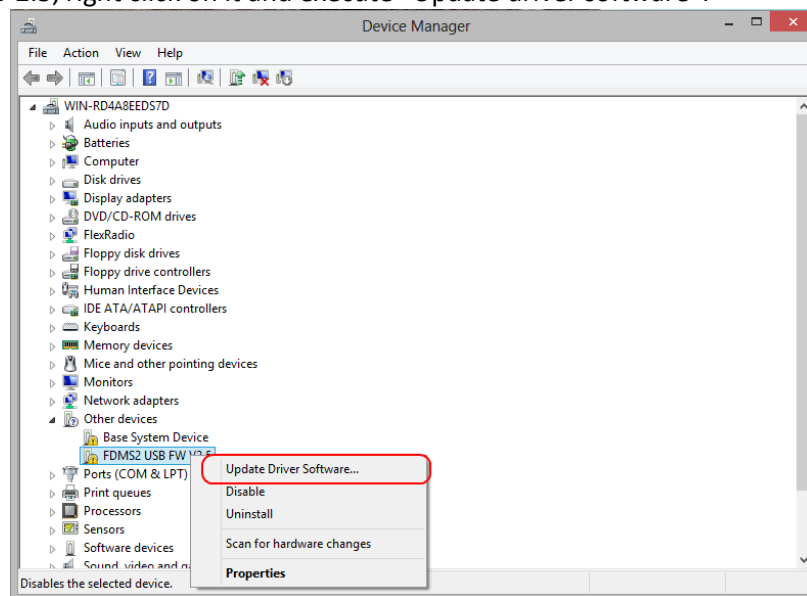
3.2.1.1 *First driver installation*

To install ELAD FDM-S2 driver, connect FDM-S2 sampler to a USB 2.0 socket on PC to power on the device. When Windows detects the new hardware, follow the steps listed below to install driver correctly:

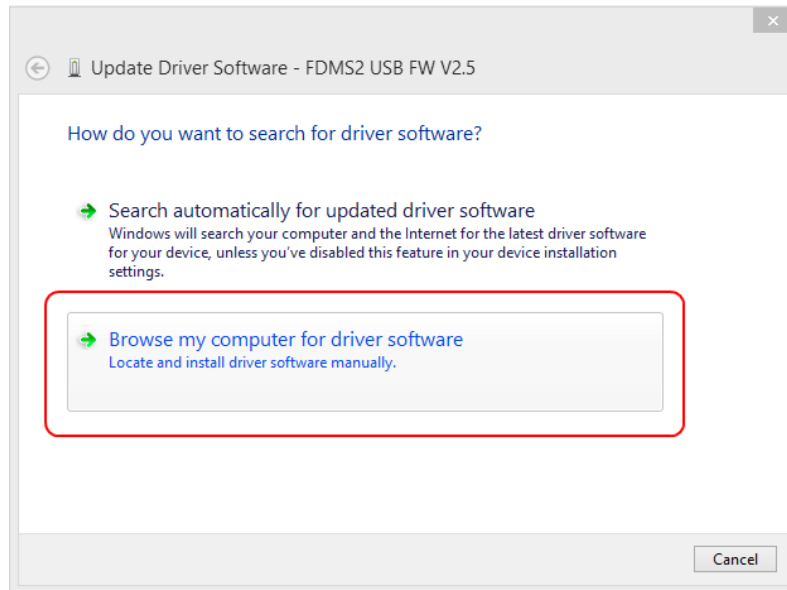
Open **Control Panel** from **Start** menu, select “System” and “Device Manager”. Expand “Other Devices” node: the system reads FDM-S2 firmware version named as FDMS2 USB FW 2.X.



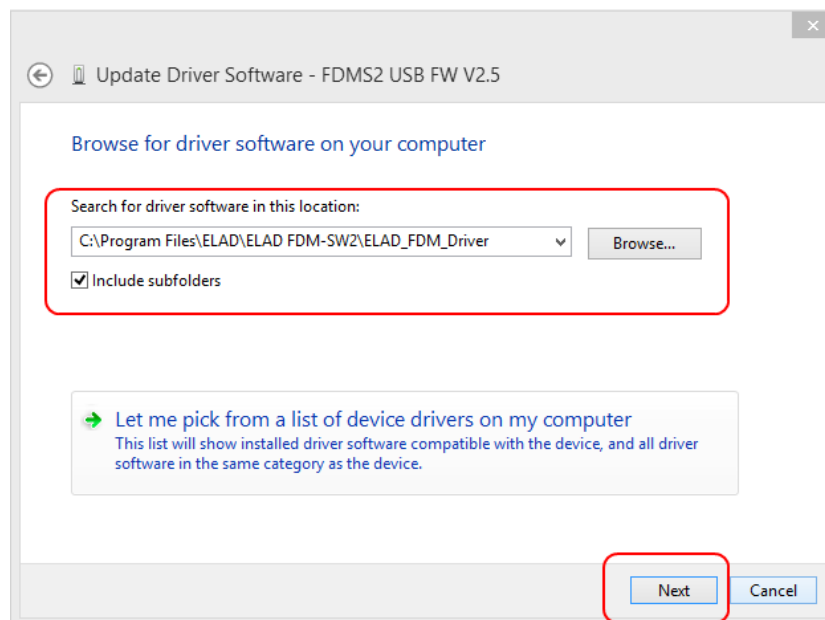
Select FDMS2 USB FW 2.5, right click on it and execute “Update driver software”.



When Windows starts the installation procedure, select the option “Browse my computer for driver software” (the second option).



In the next dialog-box, insert the driver folder location using “Browse” button and check the option “Include subfolders”. In this way manual driver search is enabled.

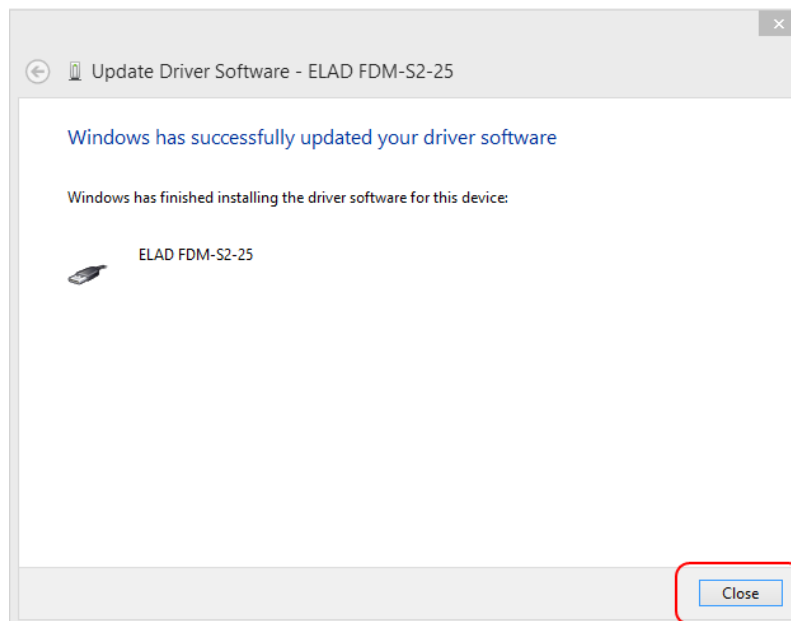


For 32 bit system select the folder: **C:\Program Files\ELAD\ELAD FDM-SW2\ELAD_FDM_Driver**
For 64 bit system select the folder: **C:\Program Files (x86)\ ELAD\ELAD FDM-SW2\ELAD_FDM_Driver**
Then click “Next”.

Click Install.



Let the hardware installation automatically completes and, at the procedure ending, click on "Close"; then disconnect and connect FDM-S2 device on the same USB socket.



Now ELAD FDM-S2 driver is installed on your PC.

3.2.2 FDM-S2 USB driver installation in Windows XP

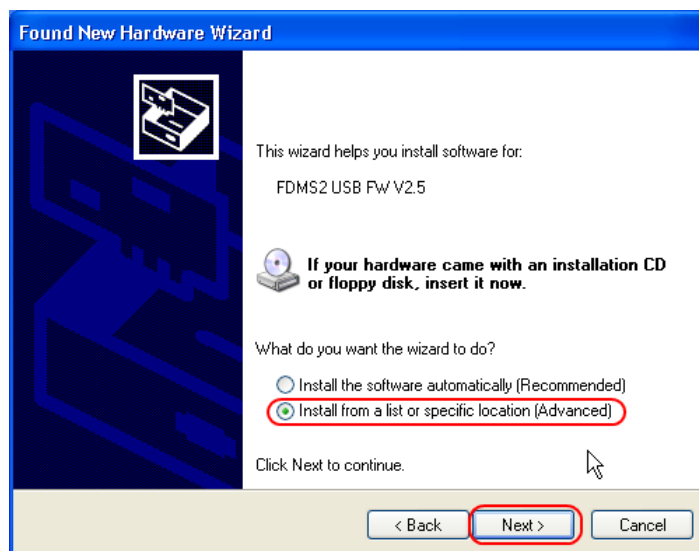
3.2.2.1 *First driver installation*

To install ELAD FDM-S2 driver, connect FDM-S2 sampler to a USB 2.0 socket on PC to power on the device. Windows XP detects the new hardware and starts the hardware installation wizard. Then, next steps to install FDM-S2 driver are listed below:

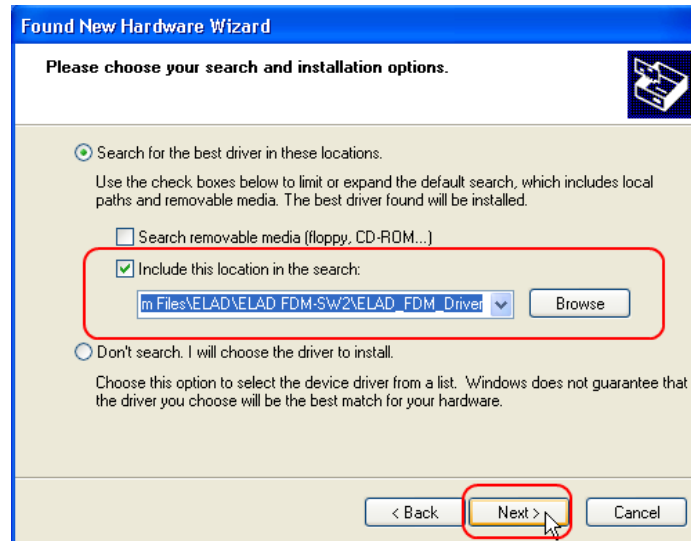
At the first dialog box, select the last option “No, not this time” and “Next”.



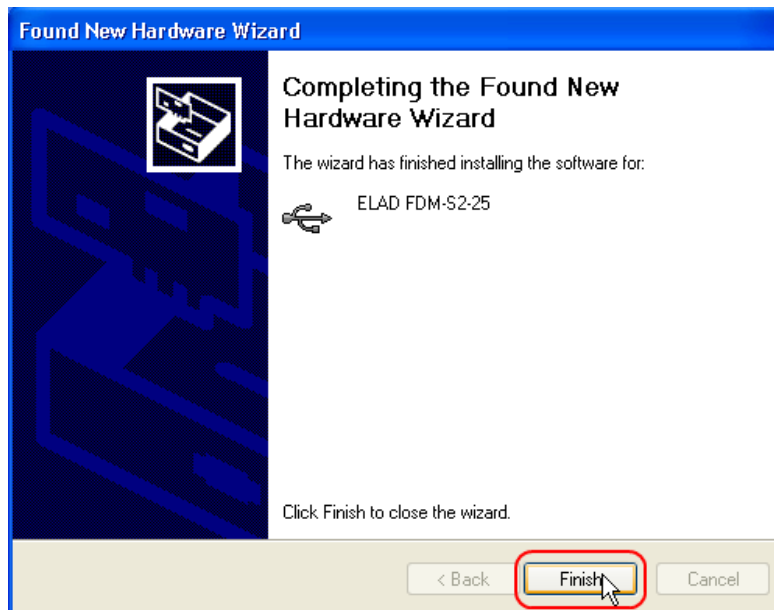
Select “Install from a list or specific location (Advanced)” and “Next”.



In the next dialog-box, check the options “Search for the best driver in these location” and “Include this location in the search” to enable manual driver search. Clicking on “Browse”, select the path where the driver folder is located: **Local Drive (C:) \Programs\ELAD\ELAD FDM-SW2\ELAD_FDM_Driver**. Then click “Next”.



Let the hardware installation automatically completes and click on “Finish”; then disconnect and connect FDM-S2 device on the same USB socket.

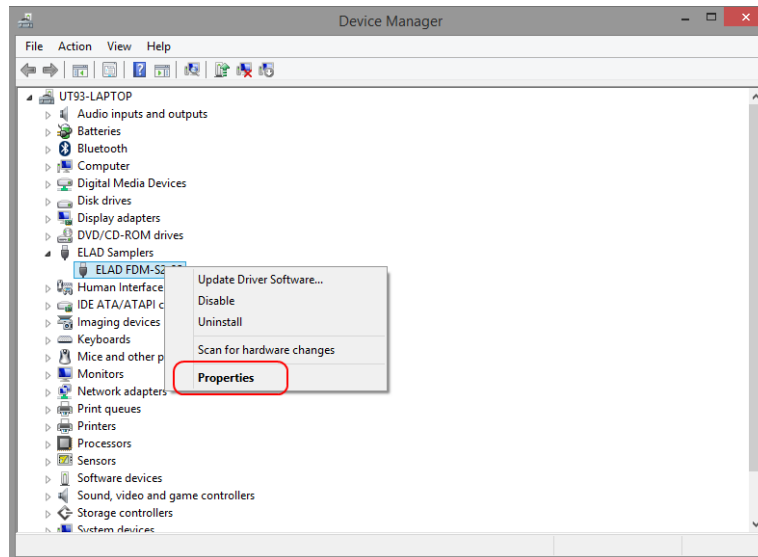


Now ELAD FDM-S2 driver is installed on your PC.

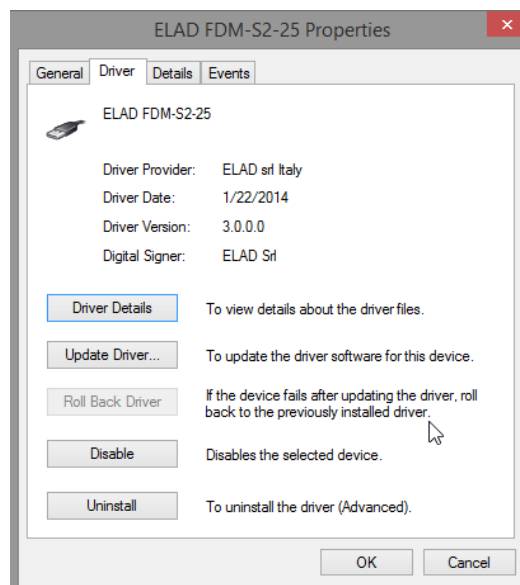
3.2.2.1 *Driver installation verify in Windows 8 and Windows 7*

To verify FDM-S2 driver current version, connect the device to USB socket (where the device driver is already installed) and open **Control Panel** from **Start** menu. Click on “System” and select “Device Manager”.

Expanding “ELAD Samplers” node, FDM-S2 device driver is installed as “ELAD FDM-S2-25”: right click on “ELAD FDM-S2-25” and select “Properties”.



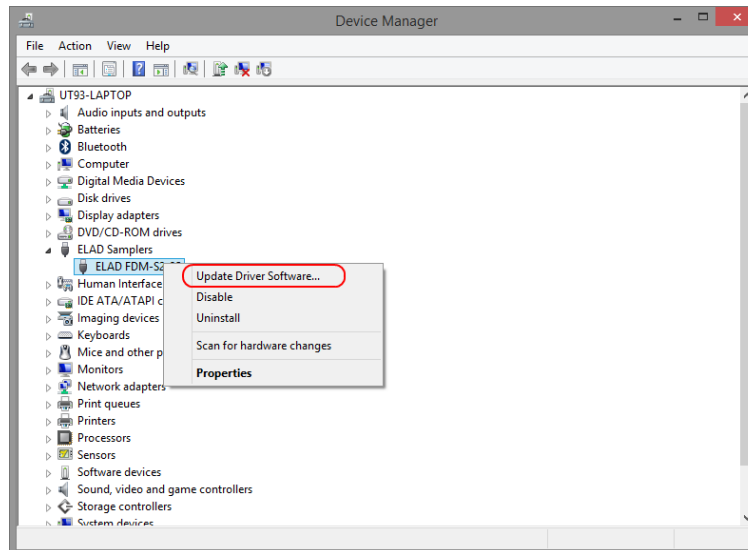
When dialog box opens, select “Driver” label: you must read provider name, current driver release date and current driver version. The figure shows an old FDM-S2 driver version.



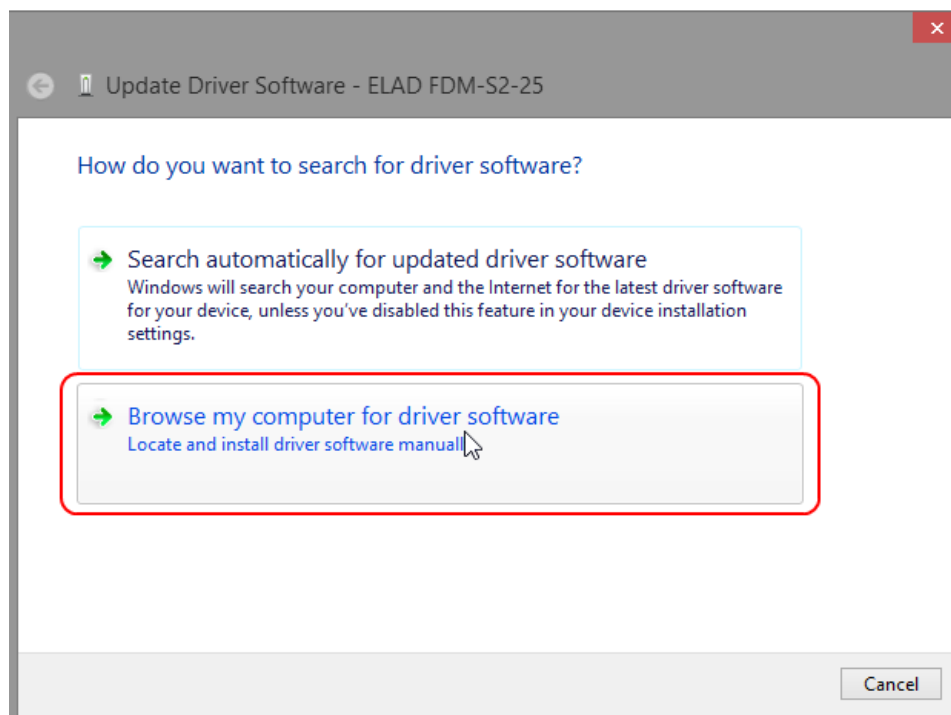
3.2.2.2 *Manual driver update*

To update FDM-S2 driver, connect the device to USB socket (where the device driver is already installed) and open **Control Panel** from **Start** menu. Click on “System” and select “Device Manager”.

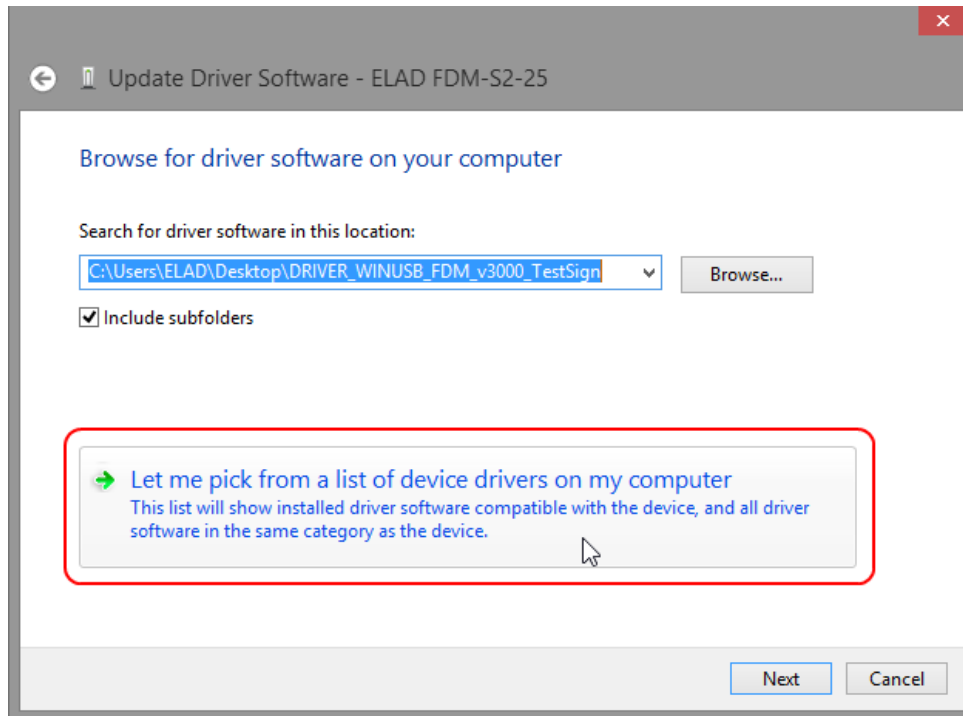
Under “ELAD samplers” list, the driver for FDM-S2 is installed as “ELAD FDM-S2-25”. Select “ELAD FDM-S2-25”, right click on it and execute “Update driver”.



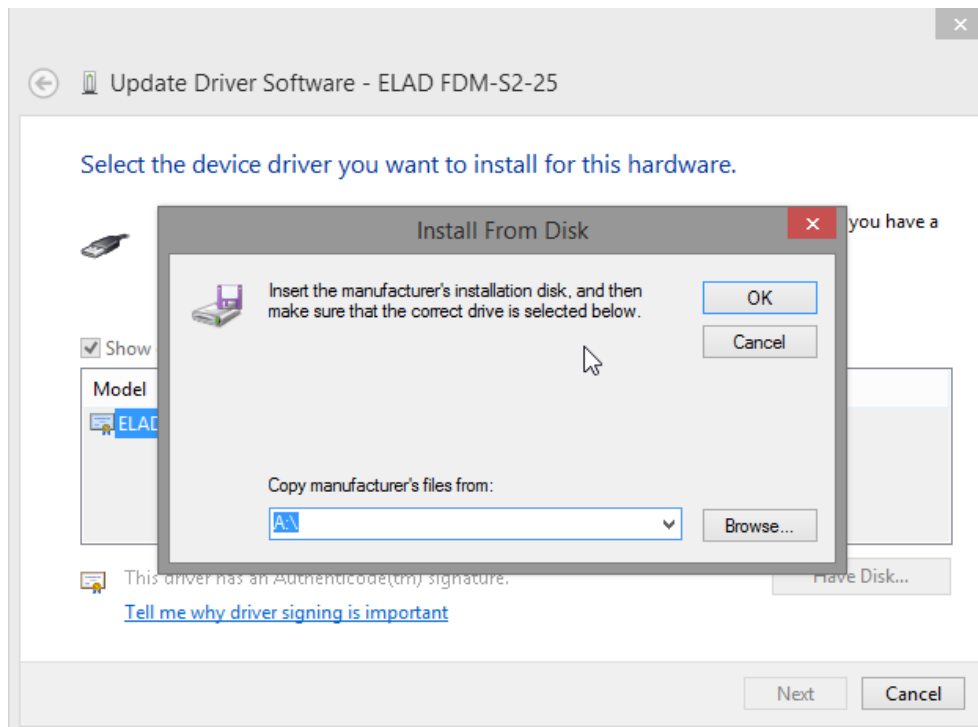
When Windows starts the installation procedure, select the last option “Browse my computer for driver software”.



In the next dialog-box, disable the option “Include subfolders” and choose “Let me pick from a list of device drivers on my computer”. Don’t click “Next”.

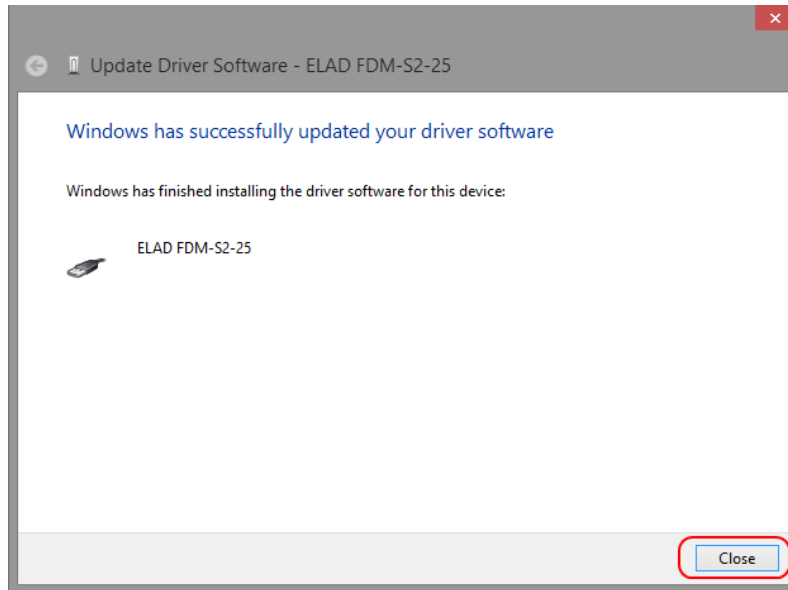


Verify that “Show compatible hardware” option is checked and ELAD FDM-S2 is selected: then click on “Have a Disk”. In this way the manual driver update is enabled. Don’t click “Next”.

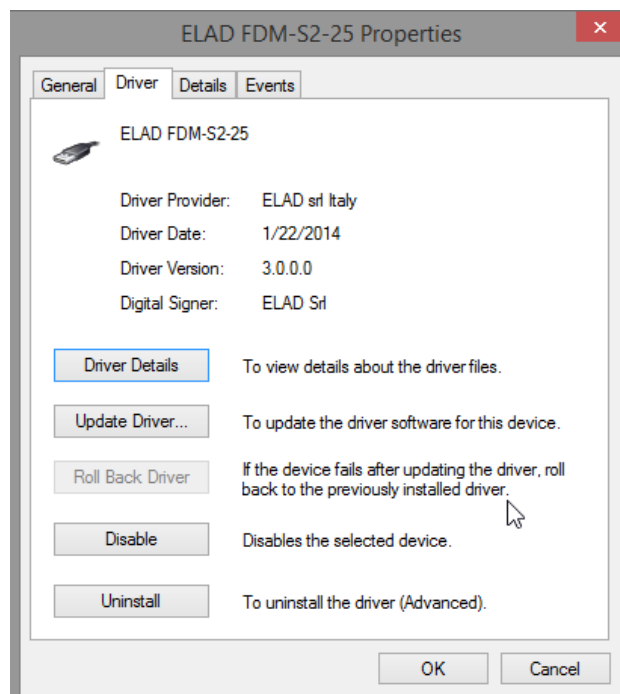


Click on “Browse” and search for FDM-S2 driver update folder location; then open winusb_fdmsampler.inf file. Click “OK” and then “Next”.

Let the hardware installation automatically completes and, at the procedure ending, click on “Close”; then disconnect and connect FDM-S2 device on the same USB socket.



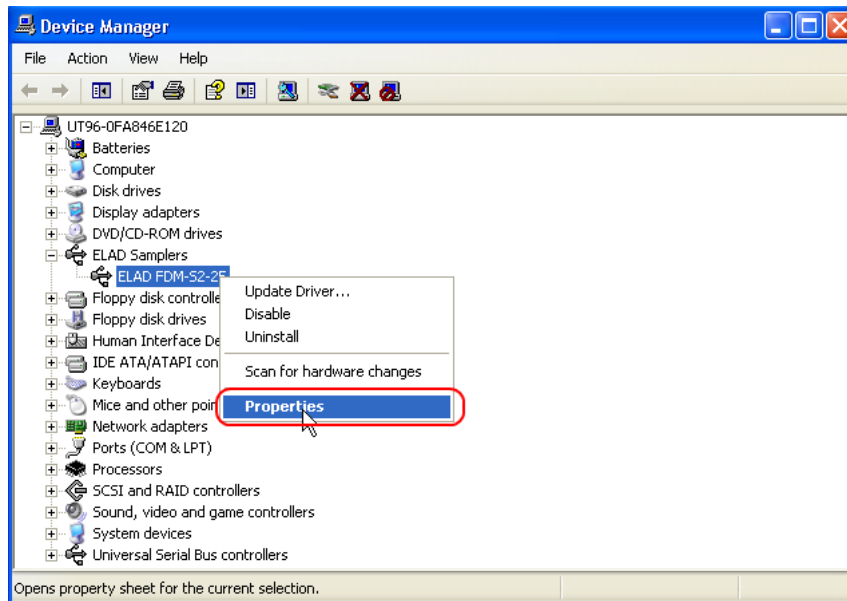
To verify that a correct update is done, enter “Device Manager” in Control Panel; under “ELAD samplers” label select ELAD FDM-S2 driver (see sub-chapter “2.2.1.2 Driver installation verify”): right click on it and choose “Properties”: select “Driver” label to visualize the last driver version (an example is depicted in figure below).



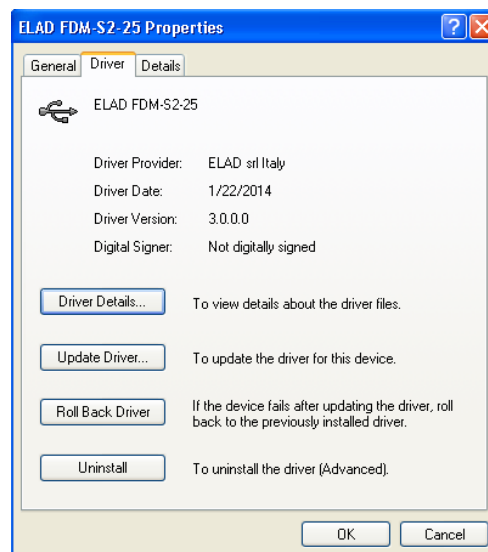
3.2.2.3 *Driver installation verify in Windows Xp*

To verify FDM-S2 driver current version, connect the device to USB socket (where the device driver is already installed) and open **Control Panel** from **Start** menu. Click on “System” and select “Device Manager” under “Hardware” label.

Expanding “ELAD Samplers” node, FDM-S2 device driver is installed as “ELAD FDM-S2-25”: right click on “ELAD FDM-S2-25” and select “Properties”.



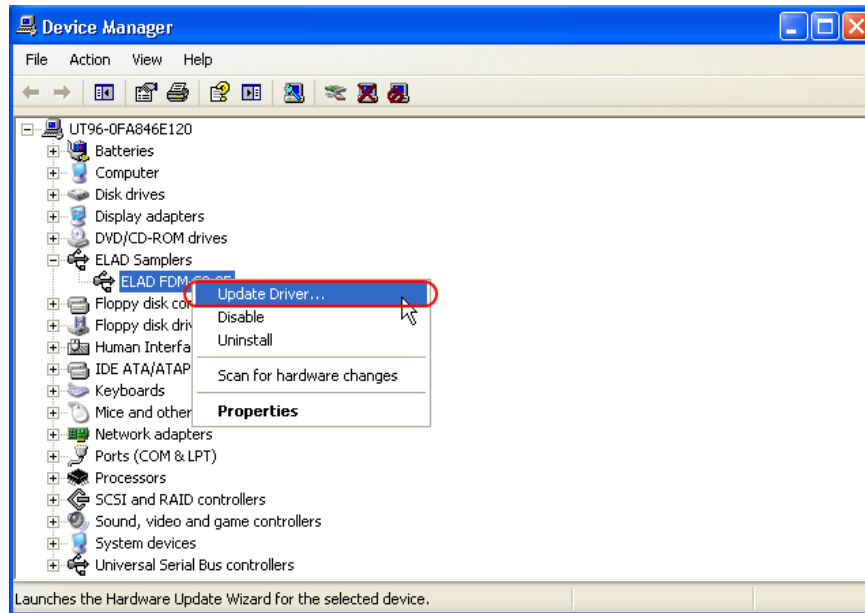
When dialog box opens, select “Driver” label: you must read provider name, current driver release date and current driver version. The old ELAD FDM-S2 driver version is shown in figure below as example.



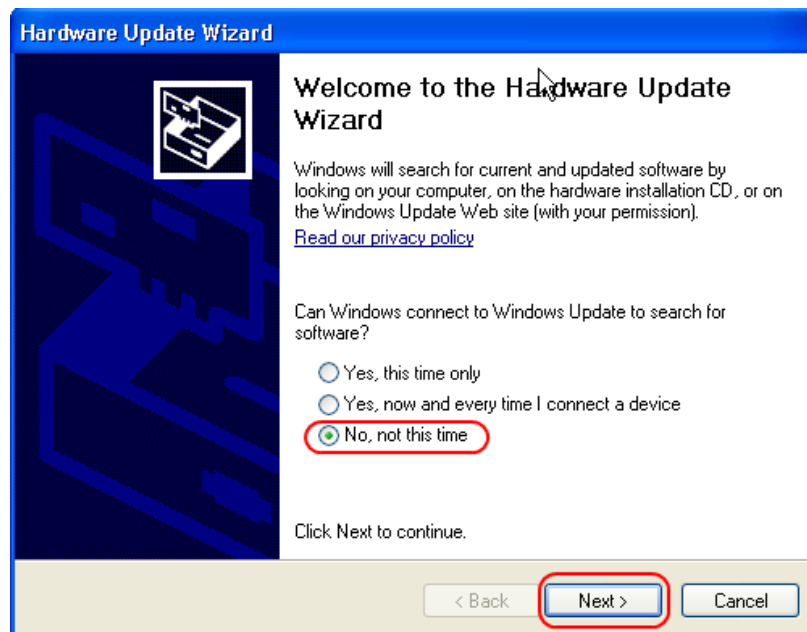
3.2.2.4 *Manual driver update in Windows Xp*

To update FDM-S2 driver, connect the device to USB socket (where the device driver is already installed) and open **Control Panel** from **Start** menu. Click on “System” and select “Device Manager” under “Hardware” label.

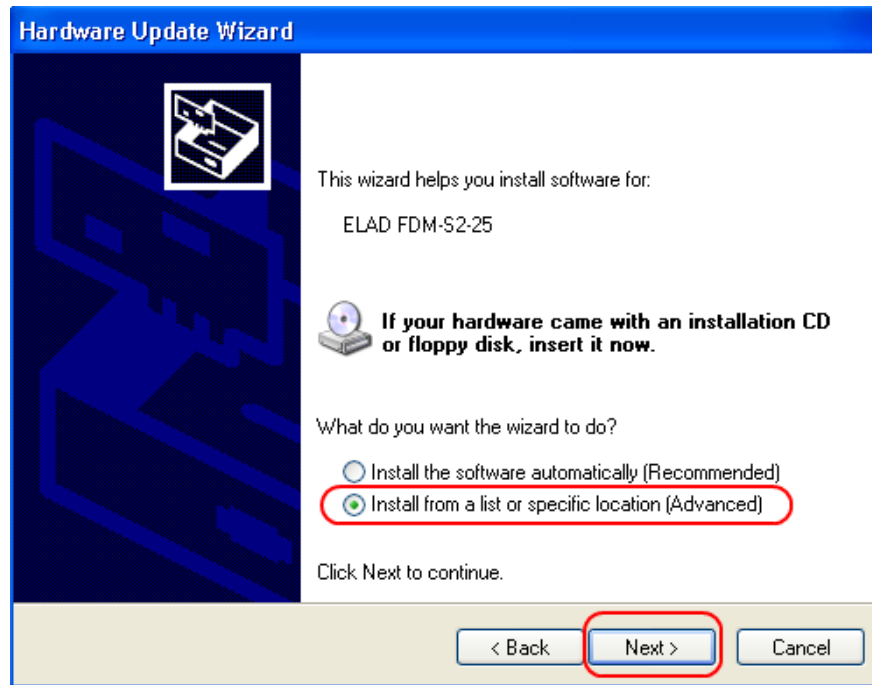
Select “ELAD FDM-S2” from “ELAD Samplers” list, right click on it and execute “Update driver ”



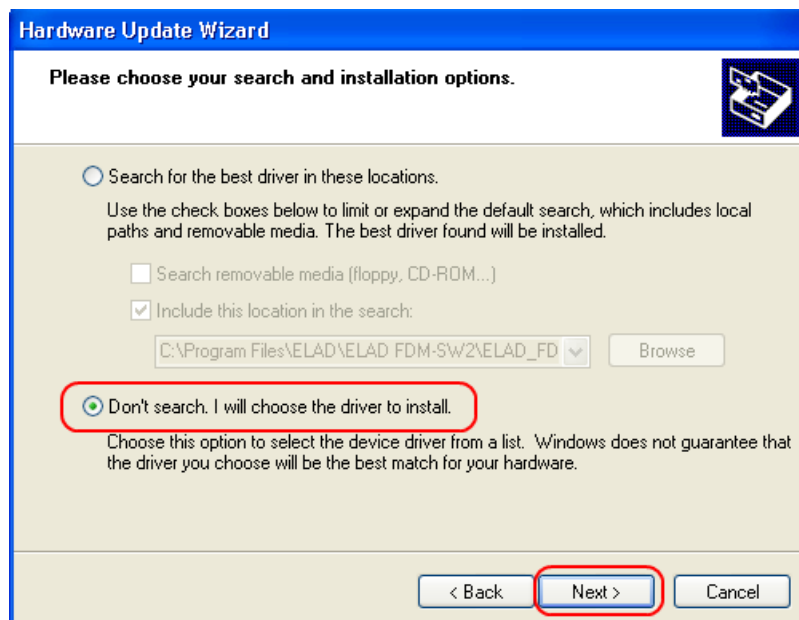
Now Windows XP launches the hardware update wizard: select the last option “No, not this time” and “Next”.



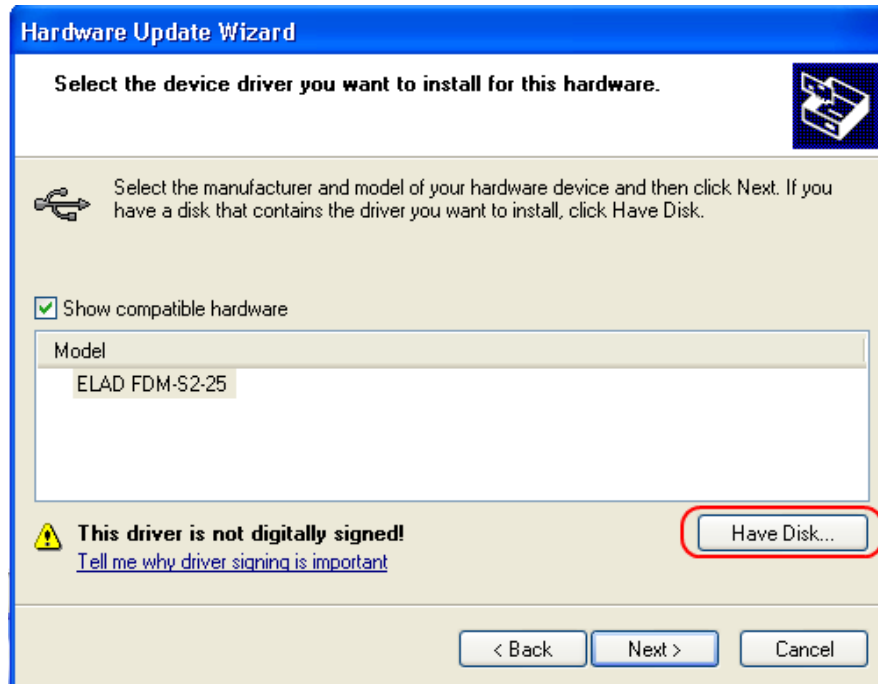
At next step select “Install from a list or specific location (Advanced)” and “Next”.



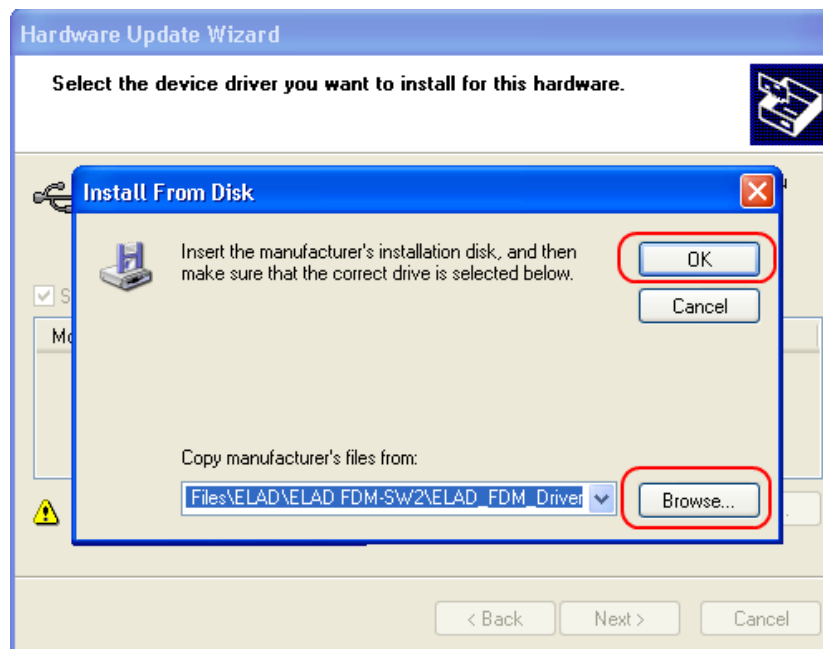
Then, disable all check-boxes that the system automatically sets and choose the last option for manual driver update, as depicted in figure. Select “Next”.



Verify that “Show compatible hardware” option is checked and ELAD FDM-S2 is selected: then click on “Have a Disk”. Don’t click “Next”.

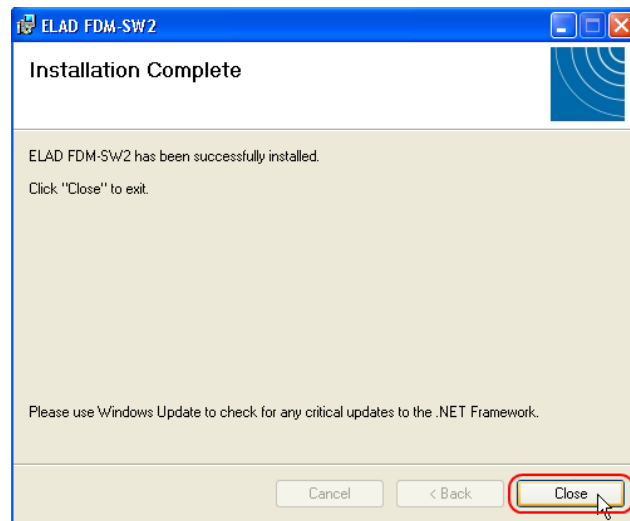


Click on “Browse” and search for the FDM-S2 driver update folder location; then open winusb_fdmsampler.inf file, as depicted in figure. Click “OK” and then “Next”.

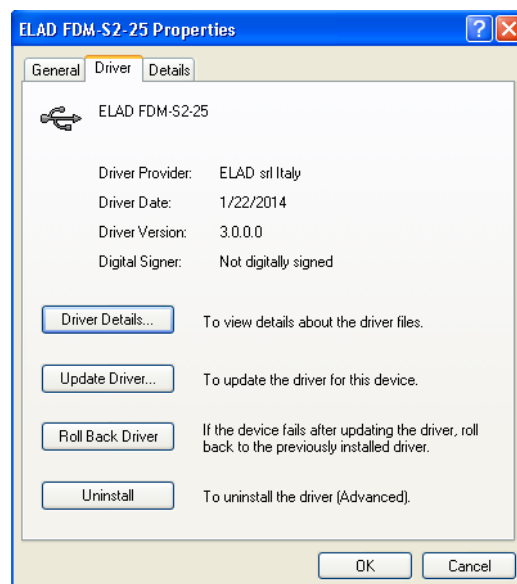


Now driver update starts: at next dialog box select “Continue Anyway” and ignore the warning.

Let the hardware update automatically completes and, at the procedure ending, click on “Finish”; then disconnect e connect FDM-S2 device on the same USB socket.

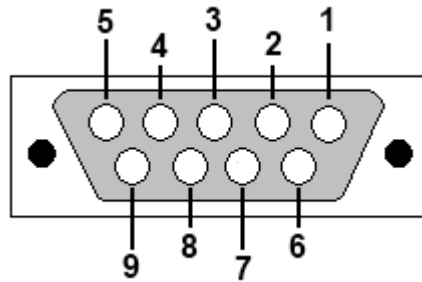


To verify that a correct update is done, enter “Device Manager” from **Control Panel**; under “Universal Serial Bus controllers” list, select ELAD FDM-S2 driver (see chapter “2.2.2.2 Driver installation verify”) right click on it and choose “Properties”. Select “Driver” label to visualize the last driver version (an example is depicted in figure below).



Annex A

FDM-S2 External Hardware Connector



- Pin 1: SFE Latch 595
- Pin 2: I2C SCL
- Pin 3: SFE CLOCK 595
- Pin 4: I2C SDA
- Pin 5: Ground
- Pin 6: Mute
- Pin 7: Reserved
- Pin 8: SFE Data 595
- Pin 9: Vcc (4.5V)

To mute the FDM-S2, connect the Pin 6 to ground.

Note: the maximum cable length should not exceed 100 mm.

FDM-S2 Technical Specifications

ELAD FDM-S2 TECHNICAL SPECIFICATIONS		
		Rev. 1 02/2014
GENERAL	Frequency Coverage	HF+50MHz Band (10 kHz ÷ 54 MHz): Direct Sampling Mode VHF1 Band (74-108MHz): Undersampling Mode VHF2 Band (135-148MHz): Undersampling Mode Bypass for experimenting use
	Antenna Connectors	HF+50MHz Band input: SMA (50 Ω) SMA/BNC adapter included VHF1 & VHF2 Bands input: SMA (50 Ω) SMA/BNC adapter included
	Temperature Range	0 ÷ 40 °C
	PC Interface	High-Speed USB 2.0 (480 Mbit/s)
	Power Supply	USB powered with double USB cable (included)
	Power Consumption	Less than 4 W (5 V-750 mA) from USB (double USB cable required) With slow Sample Rate DLLs (for example 192kSamp/sec) typical 2.6 W
	External I/O Connector	Female DB9 (mute control, I ² C and SPI interface)
	Absolute Maximum RF Input Level	+20 dBm
	Dimensions	110 (W) x 40 (H) x 90 (D) mm
	Weight	360 g
HF+50MHz Band RECEIVER	Configuration	Direct sampling – ADC DDC with FPGA Xilinx Spartan6 XC6LXC25
	A/D Conversion	122.88 MSPS @ 16 bit/sample
	Sensitivity	HS ⁽¹⁾ Typical: -122 dBm (CW, BW 500 Hz, 10 dB (S+N)/N) LS ⁽²⁾ Typical: -110 dBm (CW, BW 500 Hz, 10 dB (S+N)/N)
	3rd Order Intercept Point	HS ⁽¹⁾ Typical: +23 dBm @ 14 MHz, Spacing 2 kHz +16 dBm @ 50 MHz, Spacing 2 kHz LS ⁽²⁾ Typical: +31 dBm @ 14 MHz, Spacing 2 kHz +25 dBm @ 50 MHz, Spacing 2 kHz
	Blocking Gain Compression	Typical: > 115 dB @ 10 MHz, Spacing 2 kHz, CW, BW 500 Hz
	Noise Floor (MDS)	HS ⁽¹⁾ Typical: -132 dBm @ 14 MHz, CW, BW 500 Hz, NR ⁽³⁾ Off -138 dBm @ 14 MHz, CW, BW 500 Hz, NR ⁽³⁾ On -130 dBm @ 50 MHz, CW, BW 500 Hz, NR ⁽³⁾ Off -136 dBm @ 50 MHz, CW, BW 500 Hz, NR ⁽³⁾ On LS ⁽²⁾ Typical: -120 dBm @ 14 MHz, CW, BW 500 Hz, NR ⁽³⁾ Off -126 dBm @ 14 MHz, CW, BW 500 Hz, NR ⁽³⁾ On -118 dBm @ 50 MHz, CW, BW 500 Hz, NR ⁽³⁾ Off -124 dBm @ 50 MHz, CW, BW 500 Hz, NR ⁽³⁾ On
	Clipping Level	HS ⁽¹⁾ : -8 dBm @ 14 MHz, -12 dBm @ 50 MHz LS ⁽²⁾ : +4 dBm @ 14 MHz, 0 dBm @ 50 MHz
	Internal Spurious Carriers	Typical: < -115 dBm @ 384 kSamp/sec, HS ⁽¹⁾
VHF1 Band RECEIVER	Configuration	Undersampling – ADC DDC with FPGA Xilinx Spartan6 XC6LXC25
	A/D Conversion	122.88 MSPS @ 16 bit/sample
	Sensitivity (WBFM @ 12 dB SINAD)	HS ⁽¹⁾ Typical: 2.5 μV @ 98 MHz LS ⁽²⁾ Typical: 10 μV @ 98 MHz
	3rd Order Intercept Point	HS ⁽¹⁾ Typical: +21 dBm @ 98 MHz, Spacing 2 kHz LS ⁽²⁾ Typical: +29 dBm @ 98 MHz, Spacing 2 kHz
	Noise Floor (MDS)	HS ⁽¹⁾ Typical: -126 dBm @ 98 MHz, CW, BW 500 Hz, NR ⁽³⁾ Off -132 dBm @ 98 MHz, CW, BW 500 Hz, NR ⁽³⁾ On LS ⁽²⁾ Typical: -114 dBm @ 98 MHz, CW, BW 500 Hz, NR ⁽³⁾ Off -120 dBm @ 98 MHz, CW, BW 500 Hz, NR ⁽³⁾ On
	Clipping Level	HS ⁽¹⁾ : -3 dBm @ 98 MHz LS ⁽²⁾ : +9 dBm @ 98 MHz
	Internal Spurious Carriers	Typical: < -110 dBm @ 384 kSamp/sec, HS ⁽¹⁾
VHF2 Band RECEIVER	Configuration	Undersampling – ADC DDC with FPGA Xilinx Spartan6 XC6LXC25
	A/D Conversion	122.88 MSPS @ 16 bit/sample
	Sensitivity (FM @ 12 dB SINAD)	Typical: 0.4 μV @ 145 MHz, NR ⁽³⁾ Off 0.2 μV @ 145 MHz, NR ⁽³⁾ On
	3rd Order Intercept Point	Typical: +5 dBm @ 145 MHz, Spacing 2 kHz
	Noise Floor (MDS)	Typical: -137 dBm @ 145 MHz, CW, BW 500 Hz, NR ⁽³⁾ Off -143 dBm @ 145 MHz, CW, BW 500 Hz, NR ⁽³⁾ On
	Clipping Level	Typical: -19 dBm @ 145 MHz
	Internal Spurious Carriers	Typical: < -100 dBm @ 384 kSamp/sec
FM Band Rejection	> 60 dB Typical: 75 dB Measured: 80dB @ 145 MHz, Interferer @ 100.76 MHz	
(1) High Sensitivity Mode, (2) Low Sensitivity Mode, (3) Noise Reduction		
All stated specifications and other product information provided in this document are subject to change without notice or obligation.		

Declaration of Conformity (EC)

The product marked as

FDM-S2

manufactured by

Manufacturer: ELAD S.r.l.

Address: Via Col De Rust, 11 - Sarone
33070 CANEVA (PN)

is produced in conformity to the requirements contained in the following EC directives:

- R&TTE Directive 1999/5/CE
- EMC Directive 2004/108/CE
- Low Voltage Directive 2006/95/CE
- RoHS Directive 2011/65/CE

The product conforms to the following Product Specifications:

Emissions & Immunity:

ETSI EN 300 330-1
ETSI EN 301 489-1
ETSI EN 301 489-15
ETSI EN 301 783-2
EN 55022: 2006 + A1: 2007
EN 55024: 1998 + A1: 2001 + A2: 2003

Safety:

EN 60950-1: 2006 + A11: 2009

And further amendments.

This declaration is under responsibility of the manufacturer:

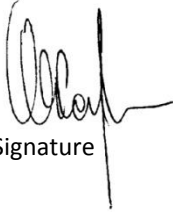
ELAD S.r.l.
Via Col De Rust, 11 - Sarone
33070 CANEVA (PN)

Issued by:

Name: Franco Milan
Function: President of ELAD

Caneva
Place

January, 29th 2014
Date


Signature

Declaration of Conformity (FCC)

The product marked as

FDM-S2

manufactured by

Manufacturer: ELAD S.r.l.

Address: Via Col De Rust, 11 - Sarone
33070 CANEVA (PN)

complies with the following requirements:

- FCC (Federal Communications Commission) Part 15

Operation is subject to the following two conditions:

(1) This device may not cause harmful interference, and

(2) This device must accept any interference received, including interference that may cause undesired operation.

NOTE: This equipment has been tested and found to comply with the limits for a Class B digital device, pursuant to Part 15 of the FCC Rules. These limits are designed to provide reasonable protection against harmful interference in a residential installation. This equipment generates, uses and can radiate radio frequency energy and, if not installed and used in accordance with the instructions, may cause harmful interference to radio communications. However, there is no guarantee that interference will not occur in a particular installation. If this equipment does cause harmful interference to radio or television reception, which can be determined by turning the equipment off and on, the user is encouraged to try to correct the interference by one or more of the following measures:

- Reorient or relocate the receiving antenna.
- Increase the separation between the equipment and receiver.
- Connect the equipment into an outlet on a circuit different from that to which the receiver is connected.
- Consult the dealer or an experienced radio/TV technician for help.

Changes or modification not expressly approved by the party responsible for compliance could void the user's authority to operate the equipment.

FCC ID: 2AAE5FDM-S2

This product is distributed in USA by:

ELAD USA Inc.
7074 N RIDGE BLVD APT 3E
CHICAGO , IL 606453586
USA

Pho: 312-320-8160